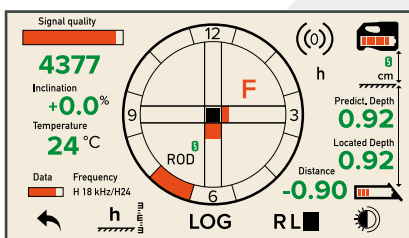
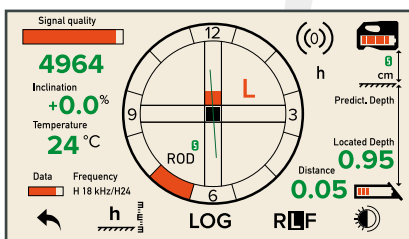
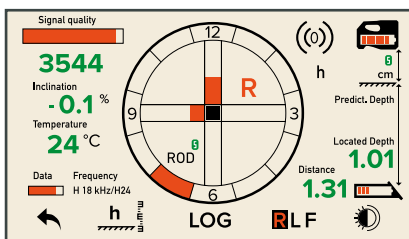


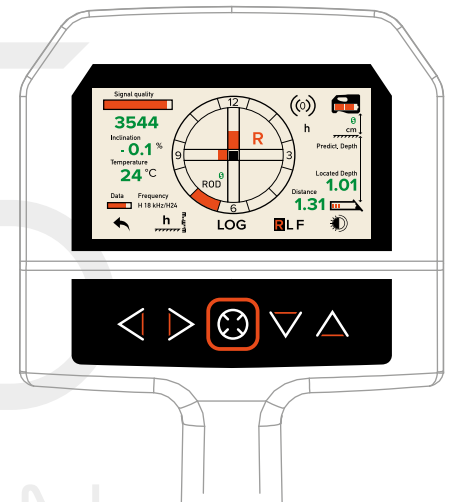
SNS t-series New Vision

Locating Screens

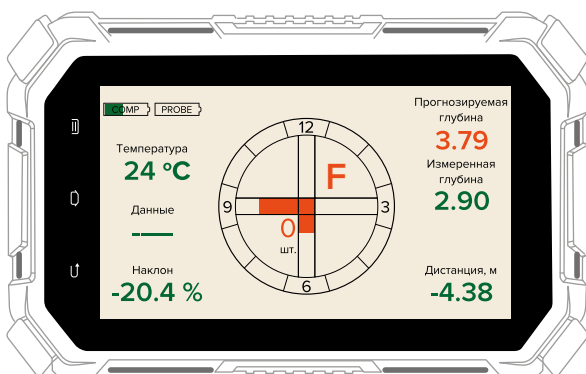
Advantage of SNS Receiver locating screen is constant displaying of all needed information



- quality of transmitter signal
- power of transmitter signal
- transmitter angle
- transmitter temperature
- transmitter power
- transmitter frequency
- No. of telemetry channel
- receiver battery level
- distance to surface
- predicted depth (in the vicinity of the Front point)
- current depth
- horizontal distance to the transmitter
- transmitter battery level
- back to menu
- correction distance to surface
- record the shot (DataLog)
- switching locating points
- day/night mode



Main information from the Receiver transfers to the Repeater, including directions to locating points



- transmitter angle
- transmitter battery level
- transmitter temperature
- repeater power
- telemetry status
- predicted depth (in the vicinity of the Front point)
- current depth
- horizontal distance to the transmitter

SNS t-series New Vision

System Features

Receiver SNS New Vision:



1. 2 (12, 30 kHz) or 7 (2, 8, 12, 18, 24, 30, 41 kHz) frequencies;
2. Internal power supply (up to 50 hours) – lifetime warranty;
3. Oled display;
4. Energy safe mode;
5. Locating screen ClockFace view: Cross ⊕/Ball and depth/distance;
6. Noise test with predicted depth according to the type of transmitter;
7. Programming the transmitter modes: frequency/power mode/sleep mode ⊕;
8. Permanent real-time displaying all locating information ⊕;
9. Visual and sound transmitter heating indication;
10. Predicted depth to drill on-target in auto mode ⊕;
11. Ultrasonic sensor for correction altitude position;
12. Roll position correction;
13. One-step calibration with memory;
14. Calibration test;
15. Depth correction by two heights;
16. 4 telemetry channels, up to 450 meters;
17. Wireless telemetry antenna up to 2 km* (option);
18. DataLog;
19. User password and password on date;
20. Diagnostics;
21. Active and passive trace seek (for SNS 8t).

Repeater SNS Vision:



1. Full-functional 8-inches Repeater-Tablet ⊕, OS Android;
2. Shock, dust, moisture proof;
3. Permanent real-time displaying all needed locating information ⊕;
4. Visual and sound transmitter heating indication;
5. Predicted depth to drill on-target in auto mode ⊕;
6. Import and creating of drilling project. Real-time project managing ⊕;
7. GPS coordinates with connection to Google Maps;
8. Internal and external power supply;
9. Export project as a document;
10. Frequency/modes underground switching helper.

Standard transmitter SNS st:



1. 3+ power modes;
2. Up to 45 meters depth;
3. 24 roll positions;
4. Angle accuracy 0.1%;
5. Distance accuracy: 0-5%;
6. One-step programming of frequencies/power modes/sleep mode ⊕;
7. Switching to any frequency during the drilling;
8. Programmed Modes underground switching;
9. Self-diagnostics and diagnostics of battery and transmitter housing;
10. All types of batteries, up to 20V.